

INTERNATIONAL  
AVIATION  
ACADEMY  
OF NEW ZEALAND



# IAANZ COURSE INFORMATION DOMESTIC STUDENTS



## **WELCOME TO THE ACADEMY**

Aviation is a highly skilled and professional industry. It is also an expanding industry, providing constant challenges and requiring of its pilots, the best possible training and qualifications.

The International Aviation Academy of New Zealand is the only dedicated full time professional flight organization of its type operating from a major international airport.

The Academy is also the largest New Zealand owned operation of its kind in New Zealand; however care is taken to give individual and personal attention to each one of our students. Our professional flight instructors have proven their abilities to be flight examiners for the Civil Aviation Authority and Aviation Services Ltd.

Career opportunities stretch internationally for holders of New Zealand professional pilot licences. Academy pilots train in an environment of varied weather patterns and terrain known to aviation employers all over the world. Our Academy trained pilots are working in European Countries, United States of America, India, the Gulf States, Indonesia, Asia, Africa as well as New Zealand, Australia and the Pacific.

Between the Academy and its parent organisation, the Canterbury Aero Club, flight training has been our business since 1928. While aviation in the 21st Century is a vastly different industry from those early days, the years of experience and continuity within our flight training organisation are invaluable to our students and recognized by employers.

Academy students have the advantage of access to a large aircraft fleet of 27 aircraft, comprising of basic trainers to multi engine instrument equipped aircraft including 5 glass cockpit equipped aircraft. Currently the Academy's training fleet consists of the following aircraft types:

Piper Tomahawk PA38



Alpha A160a





Piper Warrior PA28-161



Piper Archer PA28-181



Piper Arrow PA28R-200



Cessna 172



Partenavia P68C



Frasca Ground Simulator



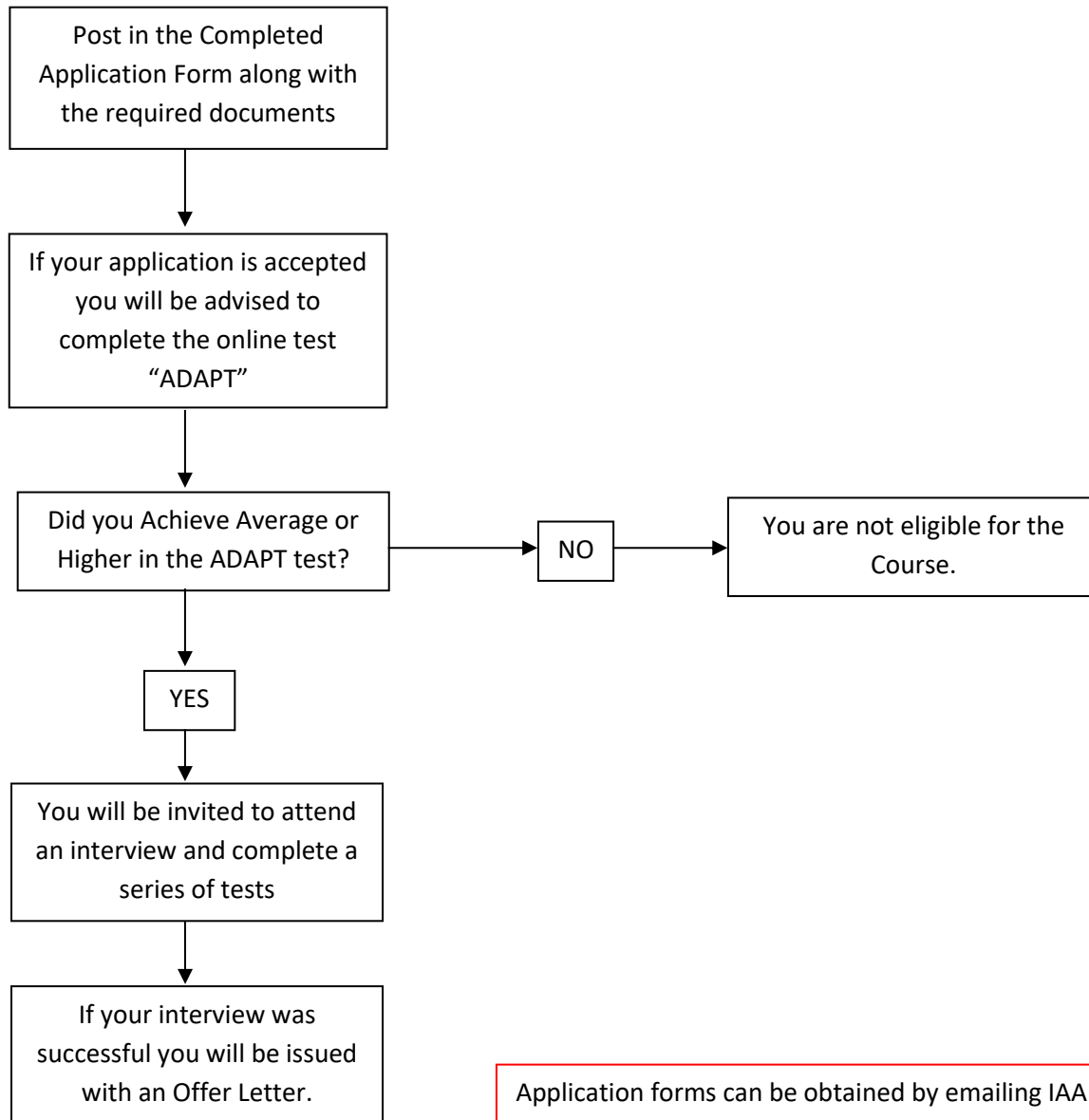
Our aircraft are maintained to the highest possible safety standards by our own Engineering division—another unique feature to our organization.

Learning to fly at an airport where the traffic mix ranges from B777 and A320's to 10 seater commuter and corporate aircraft, puts our students in a professional environment and gives them an advantage from the start of their training.



The Academy has exclusive use of its own satellite airfield just 8 kilometres away, offering a quiet, focused training ground just outside the Christchurch air traffic zone. Such flexibility is unparalleled in New Zealand.

## Application / Enrolment Process



Application forms can be obtained by emailing IAANZ or downloading from the Academy website. All completed applications should be addressed to the **Course Coordinator** and sent to one of the following addresses:

**Postal: IAANZ**  
**PO Box 14006**  
**Christchurch International Airport**  
**New Zealand**

**Email: [iaanz@cac.co.nz](mailto:iaanz@cac.co.nz)**

## Entry Criteria

To be eligible for any of our courses you must be able to show the ability to complete the course, have a clear criminal and driving offence record and be able to hold the appropriate class of medical. If you meet the following entry criteria listed below you can download an application form from our website, complete it and email to [iaanz@cac.co.nz](mailto:iaanz@cac.co.nz), we will then arrange for an interview and aptitude testing, if successful and accepted onto a course with IAANZ, you will be sent an Offer of Enrolment.

To be eligible for entry onto one of the Academy courses you must be:

- At least 18 years of age before the start date of your course
- Successfully complete the ADAPT Trainee Pilot Pre-screening Test (score Average or above)
- Hold NCEA Level 3 – 14 credits in a language-rich subject (such as, but not limited to, English, history, art history, geography, biology) and 14 credits in a numbers-oriented subject (such as, but not limited to, calculus, statistics, physics, chemistry, accounting ) OR gained UE OR hold a Level 4 Trade Certificate or equivalent. If you do not meet the academic requirements you may be Offer a Place on the condition that you complete all PPL Theory subject exams within a 42 day period at the start of the course.
- Hold an Aviation Class 1 medical certificate
- Meet the 'Fit & Proper Person' requirements of CAANZ. Please refer to the CAA Fit and Proper Person Handbook. [https://www.caa.govt.nz/Forms/FPP\\_Handbook.pdf](https://www.caa.govt.nz/Forms/FPP_Handbook.pdf)
- Be competent in spoken English to meet CAANZ requirements. Generally this is having completed four years secondary schooling in a country where schooling activities have taken place in English or by attaining a level of IELTS 5.5 in an English Language Test or its equivalent.

To complete the Diploma in Airline Preparation (which includes the Air New Zealand Multi Crew Course) additional criteria apply relating to entry criteria. The criteria include:

- Hold NCEA Level 3 Certificate with – min 14 credits in a English-rich subject ( English, history, art, geography, biology, classics, art history, journalism, media studies, religious studies, physical education) and min 14 credits in a numbers-oriented subject (such as, but not limited to, calculus, statistics, physics, chemistry, accounting ), or have completed all PPL Theory subject exams within a 42 day period or have a Level 4 or higher Trade Certificate or Equivalent
- English language as above but if not your first language then a minimum of IELTS 6.0 with no sub part (reading, writing, listening or speaking) below 6.0 or equivalent.
- An up-to date Criminal Convictions Report showing:
  - A conviction free period of at least three years prior to the date on which training will commence, and no more than one conviction for drunk driving, and



- An up-to date Demerit Points and Suspension History Report (Traffic Offence History) showing a maximum of 75 demerit points within the three years immediately prior to the course start date.
- Hold NZ Citizenship or permanent residency
- An interview to assess non-technical competencies
- A simulator assessment to assess technical competencies

## Course Information

### NZQA Approved Qualifications:

- NZ Diploma in Aviation - General Aviation ***(limited Student Loan funding available)***
- NZ Diploma in Aviation - Airline Preparation ***(limited Student Loan funding available)***
- NZ Diploma in Aviation - Flight Instruction ***(limited Student Loan funding available)***

The NZ Diplomas in Airline Preparation and Flight Instruction have a selection process. Students apply for entry for these in the second year of the Diploma in General Aviation.

### NZQA Approved Training Schemes:

- Private Pilot Licence (PPL)
- Commercial Pilot Licence (CPL)
- Instrument Rating (SEIR or MEIR)
- Instructors Rating Course
- GPS Rating
- Renewals

## Course Fees

The course fees include:

- First time theory instruction and examination fees for PPL, CPL, IR and ATPL
- Flight Training
- Initial PPL, CPL, IR and C Category Instructor Flight Tests
- Airways and Local Aerodrome Landing Fees
- Course Notes
- Compulsory course costs

NB: Course fees include one attempt at each exam and flight test. In the unlikely event of a test or exam failure, extra training and test or exam costs will be incurred. These costs are not covered via student loan funding or included in the self funding course price.

## Course Related Costs

The following additional costs are not covered by the Student Loan Fees or by the self-funding course fees and need to be budgeted for by the student: NZCAA Medicals, Headset, Uniform, I-Pad, Text Books and Equipment.



**Note:**

Course fees/costs are an average and may vary depending on the academic standard and flying ability of the student. We reserve the right to require you to undergo additional training in order to reach the required standard. This may require additional time and expense. We endeavour to maintain quoted costs, however due to circumstances beyond our control e.g. fuel increases, currency fluctuations etc price changes may occur.

## Qualification Details

### 1) NZ DIPLOMA IN AVIATION – GENERAL AVIATION (GA)

Theory Subjects Covered:

- PPL Navigation and Flight planning
- PPL Air Law
- PPL Meteorology
- PPL Aircraft Technical Knowledge
- PPL Human Factors
- PPL Flight Radio Telephony Operator
- CPL Navigation and Flight planning
- CPL Air Law
- CPL Meteorology
- CPL Aircraft Technical Knowledge
- CPL Human Factors
- CPL Principles of Flight
- Instrument Rating Navigation
- Instrument Rating Law
- Instrument Rating Navigation Aids
- Basic Turbine Knowledge
- ATPL Navigation
- ATPL Advanced Aerodynamics
- ATPL Flight Planning
- ATPL Air Law
- ATPL Instrument and Navigation Aids
- Dangerous Goods
- Winter Flying

*Note: This qualification only covers 5 out of the 7 ATPL subjects. If you choose not to continue on to the NZ Diploma in Airline Preparation Level 6, you can opt to self fund the other 2 ATPL subjects to ensure all 7 are completed. At IAANZ all loan funded students are initially enrolled in to the Diploma in General Aviation - Level 5*

Flight Training Requirements:

CPL / MEIR Total 240 hrs:



- 100hrs Dual Instruction
  - 100hrs Solo flying
  - 2hrs Flight Test
- MEIR Component 45hrs:
- 12hrs Dual Instruction in the Simulator
  - 8hrs Dual Instruction in the Single Engine Instrument Aircraft
  - 25hrs Dual Instruction in the Twin Engine Instrument Aircraft

**2<sup>nd</sup> Year pathways to the NZ Diploma in Airline Preparation and NZ Diploma in Flight Instruction.**

**2) NZ DIPLOMA IN AVIATION – AIRLINE PREPARATION**

Includes the courses offered in NZ Diploma in General Aviation plus the addition of the following

- ATPL Meteorology
- ATPL Human Factors
- Air NZ Airline Multi Crew

**3) NZ DIPLOMA IN AVIATION – FLIGHT INSTRUCTION**

Theory Subjects Covered:

*Includes the theory subjects offered in NZ Diploma in General Aviation plus the addition of the following*

- Instructional Techniques Course
- 6 week C-Cat ground course

Flight Training Requirements:

*Includes the flight training requirements offered in NZ Diploma in General Aviation plus the addition of the following*

- 50hrs Solo
- 25hrs Dual Instruction
- Spin Recovery Training

**Qualification Costs**

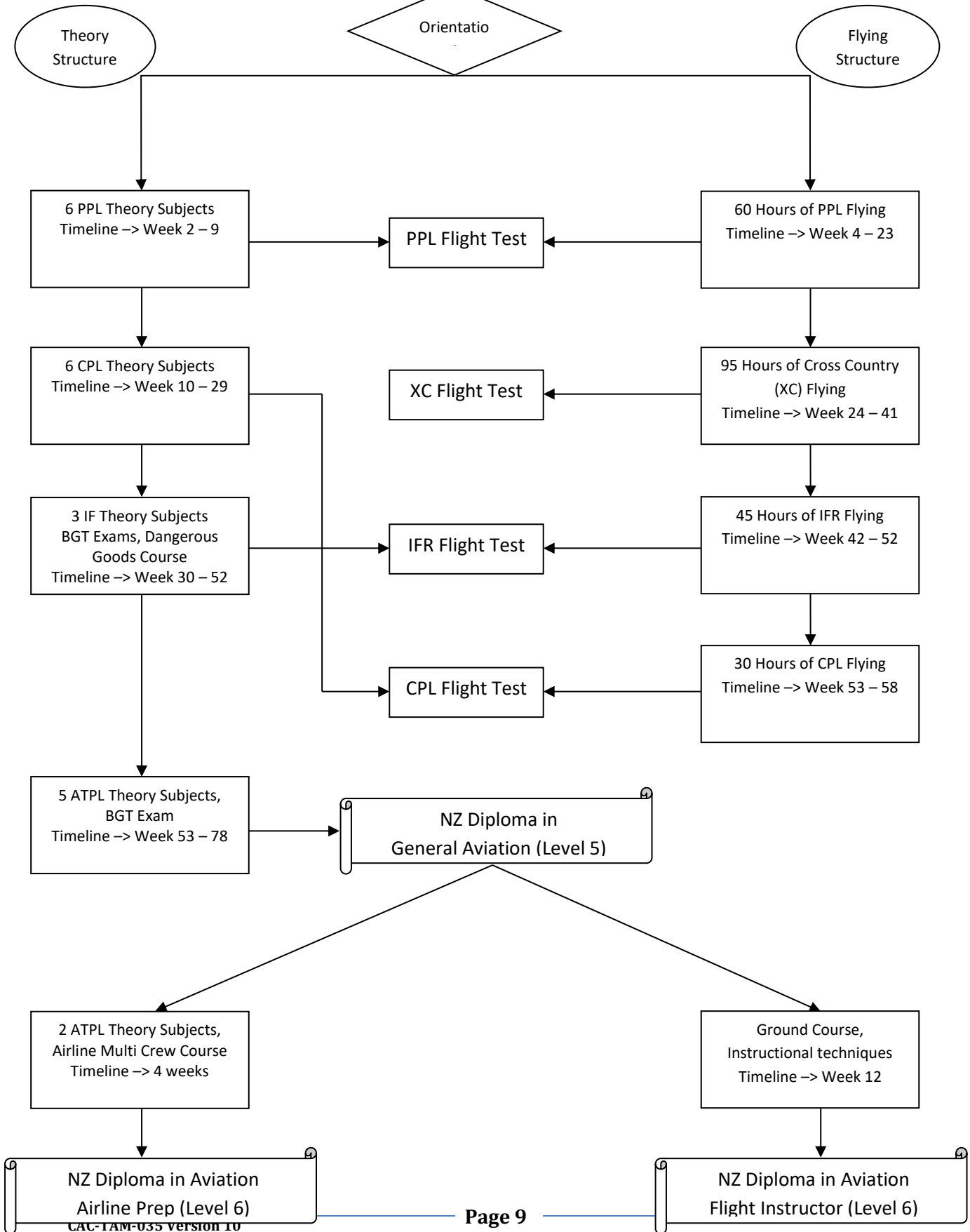
Qualification	Duration	EFT Value	Course Cost	Available Student Loan	Student Shortfall
NZ Diploma in General Aviation - Level 5	16-24 Months	2.2500	\$ 99,701	\$ 78,750	\$ 20,951
NZ Diploma in Airline Preparation - Level 6	3 Months	0.4583	\$TBC	\$ 16,042	\$0
NZ Diploma in Flight Instruction - Level 6	3 -6 Months	0.7333	\$ 25,579	\$ 25,579	\$0

\*The student shortfall is due to the lack of government funding. IAANZ offers students payment options. Prices are quoted for 2019 and subject to change.





IAANZ Domestic Student Course Information





## Training Schemes

### 1) PRIVATE PILOTS LICENCE (PPL)

Course Length: 6 months

Course Cost: TBC

Theory Subjects Required:

- Navigation and Flight planning
- Air Law
- Meteorology
- Aircraft Technical Knowledge
- Human Factors
- Flight Radio Telephony Operator

Flight Training Requirements: 65hrs total flight time consisting of:

- 47hrs Dual Instruction
- 16hrs Solo Flying
- 2hrs Dual Instruction in the Elite Simulator

### 2) COMMERCIAL PILOT LICENCE (CPL)

Course Length: 10 months

Course Cost: TBC

Theory Subjects Required:

- Navigation and Flight planning
- Air Law
- Meteorology
- Aircraft Technical Knowledge
- Human Factors
- Principles of Flight

Flight Training Requirements: 202hrs total flight time consisting of:

- 100hrs Dual Instruction
- 100hrs Solo flying
- 2hrs Flight Test

The hours flown through the PPL and/or MEIR stage can be credited towards the total flying hours required for CPL.

### 3) INSTRUMENT RATING – Single or Multi (SEIR or MEIR)

Course Length: 3 months (pre-requisites – PPL Licence & all CPL theory exams)

Course Cost: TBC

Theory Subjects Required:

- Instrument Rating Navigation
- Instrument Rating Law
- Instrument Rating Navigation Aids

Flight Training Requirements: 45hrs total flight time consisting of:

- 17hrs Dual Instruction in the Simulator



- 7hrs Dual Instruction in the Single Engine Instrument Aircraft
- 21hrs Dual Instruction in the Twin Engine Instrument Aircraft

#### **4) INSTRUCTOR RATING COURSE**

Course Length: 12 weeks

Course Cost: \$TBC (includes 50 hrs of PIC hr building towards the required 150 PIC)

You must hold a CPL licence to be eligible to enrol on this course.

Theory Subjects Required:

- Instructional Techniques Course (valid for 1 year only)
- 6 week C-Cat ground course

Flight Training Requirements: 75hrs total flight time consisting of:

- 25hrs Dual Instruction
- 50hrs Solo (at your flight test you need a minimum of 150hrs PIC)

#### **5) ATPL (Airline Transport Pilots Licence) Theory**

Course Length: 22 weeks (pre-requisites – CPL)

Course Cost: TBC

The purpose of this ground class is to prepare you adequately for the ATPL and Basic Gas Turbine Rating.

This course has been structured strictly as per the syllabus stated in AC 61-7 and AC 61-10 provided by CAANZ. Students are required to appear for eight exams as part of their license process. They are:

- ATPL Air Law
- ATPL Air Navigation
- ATPL Flight Planning
- ATPL Advanced Aerodynamics, Performance and Aircraft Systems
- ATPL Meteorology
- ATPL Human Factors
- ATPL Instrument & Navigation Aids
- Basic Gas Turbine Knowledge

## General Information

### Delivery of the courses

The Academy's ground courses are delivered at our purpose built complex located on the western side of the Christchurch International Airport, within the Harewood Aviation Park on Aviation Drive.

### Transport

The Academy is only ten minutes drive from the main airport terminal buildings and most students use their own motor vehicle or bike for transport. Some students elect to car pool. Unfortunately there is no public transport out to the Academy. Flying may be out of our West Melton airfield for which we provide transport to and from.

### Facilities

The Academy has impressive facilities that include a large fleet of 30 aircraft ranging from 2 seat trainers to multi engine instrument flight rating trainers, 2 aircraft hangars, an engineering workshop, 3 large air-conditioned lecture rooms, 9 pre or post flight briefing rooms, a flight planning area, flight simulators, a large viewing lounge with a deck that looks out onto the airport and the port hills of Christchurch and several small meeting rooms. There is also an onsite bar and social facilities.

### Staff

The Academy employs a staff of some 30 qualified flight instructors and specialised theory lecturers. They are committed to assisting their students to achieve their career goals. The Academy runs an instructor/student ratio of a maximum of 1:5 for practical training and a ratio of 1:30 for all theory classes.

### Accommodation Options:

Christchurch is a university city and has a ready supply of well priced good quality accommodation within easy commuting distance of the Academy.

### Flats and Apartments

Generally, a flat will cost approx. \$150 - \$200 per person depending on the type of flat, although this can vary depending on the area. Other shared costs include power, phone, internet access and food. Contents insurance is also recommended. (Houses or apartments can cost more: a 3 bedroom house, with a single garage can cost approx. \$450—\$550 or more per week depending on the area, the age of the house and other facilities offered, i.e white ware) A good website to use for a rental property is: [www.trademe.co.nz](http://www.trademe.co.nz)

### Support Services

The Academy has contacts with several support services including Citizens Advise Bureau, Community Law Centre, and Christchurch Library, counselling, general medical enquiries and other issues that may arise. Names of each organization can be obtained from the administration team.

### Health Support

As all student pilots in training have a medical clearance each year, generally the need for health support is reduced. However, students are advised to consult an aviation medical assessor for most health issues.

### **Fit and Proper Person**

While on the course a conviction for drunk driving (or other serious offence or serial offending) breaches the fit and proper person criteria set by the NZCAA. If this happens, your training will be reviewed and termination could be a possibility. Also, 75 demerit points or above can have an adverse affect on your ability to obtain your CAA licence. This is equivalent to two/three minor speeding offences (20 demerit points each) and a restricted driver carrying an unauthorised passenger (25 demerit points). You are required to advise the Academy and CAA immediately of any criminal, drug, or alcohol offence or medical problem that may result in the suspension of a Class 1 medical prior to or during your training.

### **Exams**

All exams are conducted by ASPEQ ([www.aspeq.com](http://www.aspeq.com)). They are all multi choice and to pass you need to obtain a mark of 70% or higher.

### **Aviation Books**

Please go to [www.waypoints.co.nz](http://www.waypoints.co.nz) to order the books you require. If you are attending a set course with IAANZ you can be issued with all of the required books/equipment by us on the Orientation day however there is no requirement that your purchase these form IAANZ.

### **Class 1 Medical Certificate**

All candidates applying for a Commercial Pilot Course are required to pass a New Zealand Civil Aviation Authority (CAA) Class 1 medical prior to course commencement. The Academy will not be held liable for any costs resulting from a students' inability to obtain a Class 1 Medical. For applicants considering other courses that do not involve obtaining a Commercial Pilot Licence, a Class 2 medical clearance is acceptable. However if the students' ultimate goal is a Commercial Pilot Licence or greater, it is recommended that the student ensures that a Class 1 medical is obtainable when required. A list of approved medical assessors around New Zealand and worldwide can be found on the CAA website:

[http://www.caa.govt.nz/medical/medical\\_home.htm](http://www.caa.govt.nz/medical/medical_home.htm)

### **Payment of accounts**

The IAANZ maintains the parent company's policy of payment of all flying on completion of the flight. As all Academy students are Aero Club members they must refer to the Club By-Laws for detailed information on the payment policy. Exceptions to this rule are Academy students who are drawing student loans who have paid in advance where their funds are held by the Public Trust. All students who are unable to pay for their training in time will be placed on a "Stop Fly" until the issue is sorted. Their log books may be kept by the CEO until the debt issue is resolved. IAANZ have the right to withhold any issued CAA licences and the log book until the account is settled.

### **Student Debt Collection Policy - IAANZ**

All students who are not able to settle their accounts in full by course end may be forwarded onto a debt collection agency. The IAANZ prefers not to use a formal debt collection agent to seek settlement of outstanding debts but will use this channel if required.

### **Student Fee Protection**

All course fees will be held in the IAANZ Milestone Public Trust Account for the duration of the students training in accordance with the Education Act 1989. An automatic drawn-down of 20 per cent of the student fee or \$3000, whichever is the lesser, at the end of the statutory withdrawal and refund period will be deducted from the Public Trust Account. Subsequent withdrawals will be drawn down regularly in arrears

over the length of the course, including holidays.

### **Withdrawal & Refunds**

Students wanting to withdraw from a course must notify IAANZ and complete a withdrawal form. Students who withdraw within the statutory refund period are entitled to a fee refund; however IAANZ is entitled to retain a portion of the fees. The portion of the fees refunded to the student and the portion retained by IAANZ is dependent on whether a student is international or domestic, and on the length of the course the student is enrolled in.

### **Domestic Students Statutory refund and withdrawal period**

#### **Course three months or longer:**

The statutory refund and withdrawal period for domestic students covers the seven days that follow Day 1 of the course start date (i.e. after 8 calendar days).

If a domestic student withdraws within the refund period, IAANZ is entitled to retain up to 10 per cent of any amount paid or \$500, whichever is the lesser.

#### **Course less than three months:**

If a domestic student withdraws from a course of less than three months (There is no statutory withdrawal and refund periods for these courses), IAANZ is entitled to retain 20 per cent of any amount paid or \$3000, whichever is the lesser, provided the student has agreed, after the following periods:

- a) two days of course attendance in respect of courses up to and including four weeks and six days
- b) five days of course attendance in respect of courses of five weeks or more, but less than three months

### **Course Closure Event**

In the event of a Course Closure students are entitled to a pro-rated refund of any undelivered services provided by IAANZ. It is recommended that students check the NZQA website periodically for closure information. Public Trust can be contacted on 0800 371 471.

## **Academy Policy**

A policy is defined as the IAANZ position or strategy in regard to a core process. A policy defines the parameters for decision making and clarifies compliance issues. Therefore the following policies listed below have been approved by either the CEO and/ or the IAANZ Directors.

### **Academic**

The IAANZ maintains a policy that the student / lecture ratio will be a maximum of 1:30.

#### **Academic: Policy on a Students Eligibility to sit an Aspeq Exam**

Any IAANZ student who has failed in-class tests or assignments continuously, or has not met the required attendance level, may not be permitted to sit the **Aspeq** exam for that theory lecture. This student may be required to re-sit theory lectures at a later date. If an exam slip has been issued, IAANZ will request a refund of the exam fee but the student may be required to forfeit this exam fee.

### **Academic: Tutorial Policy**

Any student who fails an in-class assessment or quiz or who fails to attend the required number of lectures will be advised by their lecturer and may be withdrawn from their exam and a remedial plan put in place. Extra tutorials may incur an additional cost.

### **Policy on Student Attendance**

All students may be required to be in attendance daily (Mon—Fri) from 0800hrs—1700hrs unless express permission has been granted by management. Please do not make any outside commitments inside these hours. Any leave applications must be approved by all of the required staff prior to the student making any firm bookings.

### **Equity of Access to Educational Opportunities Policy**

The IAANZ maintains a policy of equity of access to educational opportunities to all applicants who meet the entry criteria and are able to satisfy the Civil Aviation Authority medical and definition of “a fit and proper person” criteria.

## **Frequently Asked Questions**

### **What advantages does the International Aviation Academy have?**

You are able to train in the professional environment of an international airport. If you are aiming to become an airline pilot, it makes sense to train in a working airline environment. With our partnership with Air NZ, we are now one of their “preferred” flight trainers. If studying for your Diploma in Airline Prep, on completion this will put you at the top of the Air NZ interview list for a pilot position once you have the required pre-requisites.

This partnership means that our training is now geared directly at the airlines with two crew, multi crew training being implemented from day one. Using standardized Route Guides and Standard Operating Procedures, all of our students are benefitting greatly from this enhanced training which prepares them much better for a life as an airline pilot.

You will have the use of our own satellite airfield at West Melton, 5 minutes flying time from Christchurch Airport. There will be times, particularly at early stages of training, when the quieter environment of our own airfield at West Melton will be a more suitable training ground. West Melton has 6 runway vectors and is for the exclusive use of our pilots. Christchurch has excellent weather with high sunshine hours.

We have three large training areas and three low flying areas in close proximity. You will have the use of our large 38 aircraft, single and multi engine fleet. We are the largest operation of our kind in New Zealand.

As a student of the Academy you will receive automatic membership of our parent company, the Canterbury Aero Club. This will give you reciprocal rights to a network of some 50 Aero clubs in New Zealand - thus giving you the advantage of obtaining briefings and "local knowledge" on cross country flights away from your home



base. You will have access to our large engineering facilities which not only provide prompt, safe and efficient "in house" maintenance of our fleet, but allow you a valuable insight into maintenance operations.

Christchurch is a welcoming city with wide open, clean green spaces, pure artesian water drinkable from the tap, a safe and caring community.

### **Which course is suitable for me?**

This depends on your final goal. If your goal is to fly for an airline, you will require a Commercial Pilot Licence (CPL) and a Multi Engine Instrument Rating. Our "Professional Pilot Course", the NZ Diploma in Aviation will provide you with these qualifications. If your goal is to work as or for a scenic flying operator, or as an agricultural pilot you will probably only require a CPL. If your goal is to work as a Flight Instructor, you will require a CPL and a Flight Instructor Rating. If your final goal is one of the above, but for reasons of finance or available time you are unable to undertake the complete course, we can offer our PPL/CPL Theory Course. This will give you a full Private Pilot Licence with the theory component of the CPL. This provides an ideal starting platform from which to complete your CPL at a later date. If you already have a licence or rating we can provide additional courses or ratings as required. If you cannot train full time with IAANZ we can structure your course on a part-time basis through the Canterbury Aero Club.

### **Are any loans or allowances available?**

The Academy's Diploma courses are approved by the New Zealand Qualifications Authority and because of this; student allowances and loans are available for New Zealand Citizens or New Zealand permanent residents who have had residency for a min of three years. For further information on loans and allowances go to ([www.studylink.govt.nz](http://www.studylink.govt.nz)).

### **Is the New Zealand Pilot Licence recognized overseas?**

The New Zealand CPL is well respected worldwide and "Kiwi" trained pilots are in demand by many airlines. The Licence meets the **International Civil Aviation Organisation (ICAO)** standards. In many cases a licence conversion will simply require passing the local flight rules examination, completing a flight test and obtaining a local medical for the type of licence you hold.

### **Are there any pre-requisites for course entry?**

NZ CAA requires that you must be 16 years old to fly solo and 17 years old to hold a Private Pilot's Licence. CAA also requires that a person must be 18 years old to hold a Commercial Pilot's Licence. The NZ CAA has no minimum educational requirements for a CPL, but high school Maths and Physics are useful.

**For our Diploma course the Academy does not accept any students (domestic or international) less than 18 years of age.** Students wishing to access student loan funding will require a minimum of NCEA Level 3 or equivalent, and will be required to pass an entrance assessment.

### **I wear glasses, will this be a problem?**

You will have to meet minimum medical standards, but in most cases this will not be a problem. Many Airline Pilots wear glasses. We recommend you consult an Aviation Medical Examiner.

**I have already flown for some hours. Will this affect my training?**

Any previous training will be recognised as prior learning and will be assessed on production of evidence. A reduction of course fees is likely.

**Can I work while I am at the Academy?**

Students are able to work part time however, it is most important that a job should not be allowed to interfere with the prime objective of training. Students should not expect part-time work to pay for their course, but wages can subsidise living expenses.

**Is a job guaranteed?**

We will provide you with a high standard of training and the accompanying skills required for you to be employed in your chosen sector of aviation. We cannot guarantee you a job. As with any training, the ability to convert learned skills into employment is up to you, how you seek the opportunities and make the most of those presented to you. The demand for well trained and qualified pilots worldwide remains very high. Our graduates hold flying positions in many parts of the world and throughout New Zealand.





## CONTACT DETAILS

### Postal Address of IAANZ:

International Aviation Academy of New Zealand Ltd  
PO Box 14006  
Christchurch International Airport  
New Zealand

### Physical Address:

International Aviation Academy of New Zealand Ltd  
Harewood Aviation Park  
25 Aviation Drive  
Harewood, Christchurch  
New Zealand

### Contact Numbers:

Phone: +64-3-358 0477  
Fax: +64-3-359 2621  
Email: [iaanz@cac.co.nz](mailto:iaanz@cac.co.nz)  
Website: [www.flighttraining.co.nz](http://www.flighttraining.co.nz)